

Innovation Forum

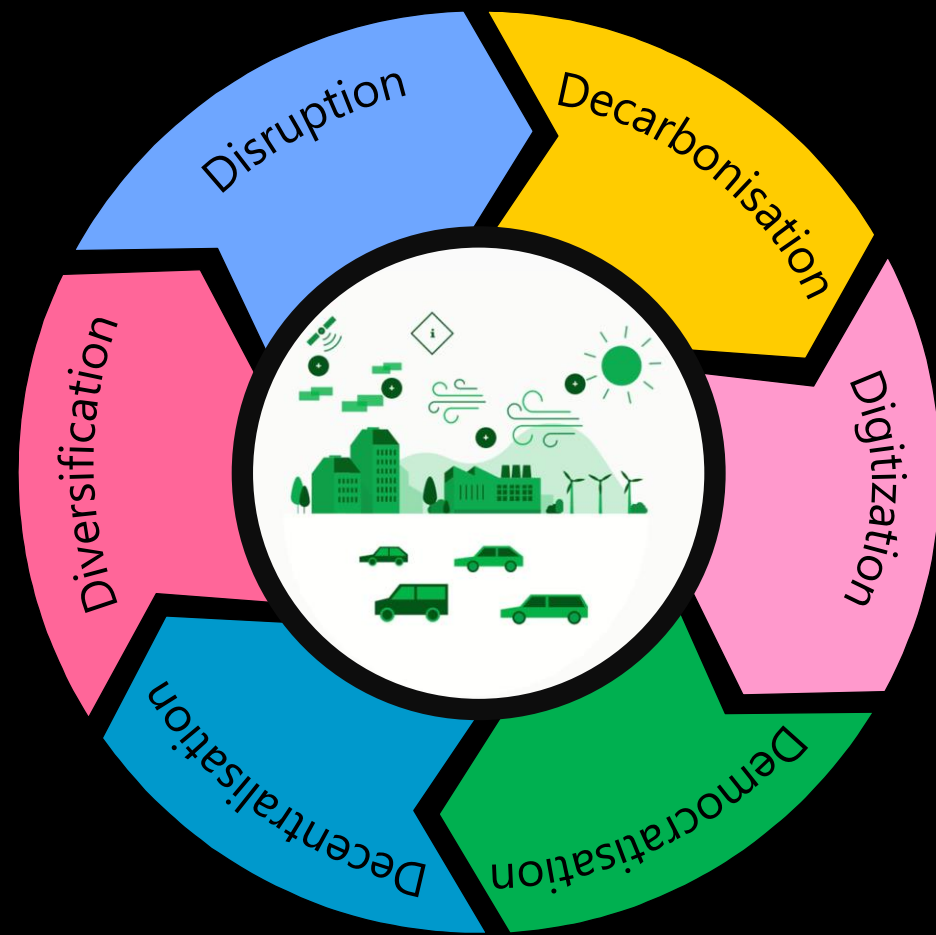
E-world of energy & water 2020
Essen – 11.02.2020

Marc Peters

CTO Energy, Environment & Utilities Europe,
IBM Distinguished Engineer
Member IBM Industry Academy

Marc.Peters@de.ibm.com

Data Is Oxygen!



Improved forecasting
IBM's windpower forecast models demonstrated significant improvements in accuracy compared to current models. Increases ranged from 5 to 15 MW per wind farm, which equated to US\$300-400K in savings per year.

Cut equipment purchases
A fleet-management company saved US\$9.5M by achieving 100% availability with fewer vehicles.

Better use of resources
An electric utility distribution company improved productivity 14% by better use of resources.

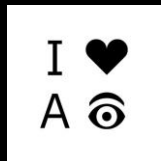
Improved asset utilization
A large OEM reduced overhaul times from 56 days to 21 days.

Reduced plant downtime
A power-generation utility reduced planned overhauls by 5% and eliminated 5% of forced outages, saving US\$4.6M annually.

Better forecasting
IBM's hydropower forecast models improved accuracy significantly compared to current models. Increases ranged from 47% to 72% per hydro facility, which equated to US\$1-6M in savings per year.

Reduced inventory costs
A power company reduced inventory by 26%, and an electric and water utility achieved 25% in inventory reduction and US\$33M in savings.

Reduced operating costs
90% of C-level executives representing 15 countries and 13 industries say weather insights could reduce annual operating costs by 2% or more.

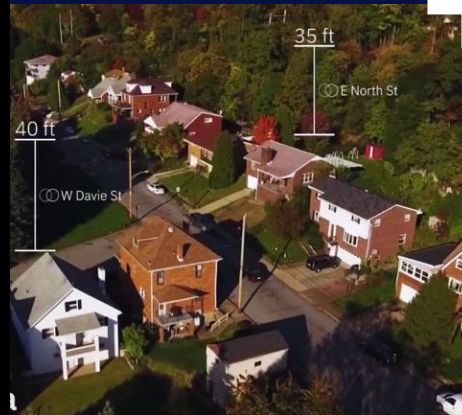
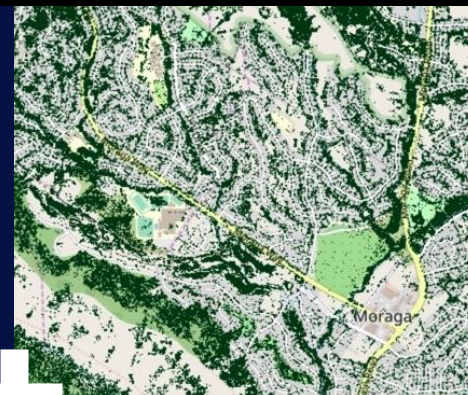


Example

Vegetation Management

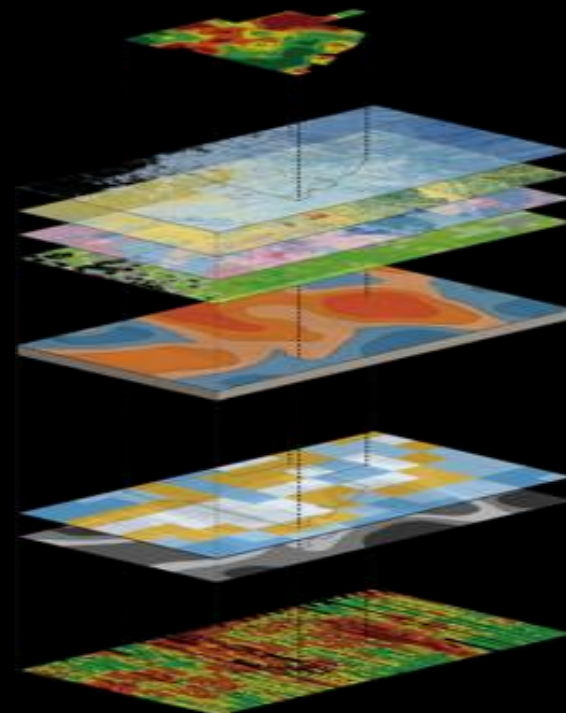
Massive Geospatial temporal data

- Satellite, and aerial imagery
- Weather
- Soil moisture
- Foliage, etc.



Combined with customer data

- Asset inventory
- Condition and location
- Historical outage data



Multi-project management

Switchable background maps

Scores and recommended actions

Corridor and corridor segments supporting multi-zone concept

Filter panel and layer selector

Vegetation information

Preview cards for detailed information

Electricity assets

