

Policy & Economy

Small and Medium-Sized Enterprises and Start-ups	Law and Taxation	Public Sector	Telecommunications and Media Policy	Social Media & Web 2.0	Economic and Innovation Policy	Education and Human Resources	Marketing, Trade Fairs, Sales
SB SME and Start-ups Chair: Bonn (GUS Group) BO: Altvater	SB Law and Taxation Chair: Hanswille (T-Systems) BO: Rehse	SB Public Sector Chair: Spohn (T-Systems) BO: Mentzinis	SB Telecommunications and Media Policies	SB Social Media	SB Economic and Innovation Policy Chair: Stocker (NSN) BO: Bühler	SB Education and Human Resources BO: Schmidt	SB Marketing, Trade Fairs, Sales Chair: Strnad (Fujitsu) BO: Altvater
Forum SME Enterprises Chair: Bonn (GUS Group) BO: Altvater	Forum Law Chair: Hanswille (T-Systems) BO: Rehse	Forum Public Sector Chair: Spohn (T-Systems) BO: Mentzinis	Forum Telecommunications and Media Policies Chair: Kopf (Telekom) BO: Holdampf/ Konarski	WG Social Media Chair: Fesel (Datev) BO: Arns	Forum Market Trends Chair: Burghardt (Techconsult) BO: Pols	Forum Education and Human Resources BO: Schmidt	Forum Marketing, Trade Fairs, Sales Chair: Strnad (Fujitsu) BO: Altvater
WG SME Policies Chair: Bonn (GUS Group) BO: Bühler	Forum Taxation Chair: Cazzonelli (Telekom) BO: Kriesel	WG E-Government Chair: Langkabel (Microsoft) BO: Mentzinis	WG Telecommunications Policies Chair: Piekarowitz (Telefónica Germany) BO: Konarski	WG Apps & Mobile Media BO: Arns	WG Public Affairs Chair: Kubink (Telekom) BO: Bühler	WG Education Policymaking and the Labour Market BO: Pfisterer	WG Sales Chair: Kahlau (IBM) BO: Altvater
WG SME Finance Chair: Prinz (CSS) BO: Kriesel	WG Taxation Chair: Cazzonelli (Telekom) BO: Kriesel	EC Chip Cards & Identification Systems Chair: Houdeau (Infineon) BO: Mentzinis	Taskforce Broadband BO: Konarski	WG Games BO: Arns	WG PR Chair: Mickleit (Microsoft) BO: Shahd	EC Vocational Training BO: Pfisterer	WG Marketing Chair: Strnad (Fujitsu) BO: Altvater
WG SME Management Chair: Krause (Infopark) BO: Altvater	WG Intellectual Property BO: Rehse	EC E-Justice BO: Mentzinis	Taskforce Net Neutrality BO: Konarski	WG E-Books & Digital Publishing BO: Rehse	WG Research and Innovation Chair: Lehner (Infineon) BO: Herzog	EC Higher Education BO: Pfisterer	WG Customer Services BO: Altvater
	EC Piracy Chair: Bredahl (Epson) BO: Rehse	WG E-Health BO: Mentzinis	WG Media Policy Chair: von Oppenkowski (Kabel Deutschland) BO: Holdampf		WG Market Research and Statistics Chair: Riegler (SAP) BO: Pols	WG Human Resources Development BO: Schmidt	WG Product Reuse Chair: Danis (Fujitsu) BO: Herzog
	WG Copyright Levis Chair: Hofmann (Sharp) BO: Kulpe	WG Public Security Chair: Bartsch (T-Systems) BO: Barth	Taskforce Net Neutrality BO: Konarski		WG Export Control Chair: Zinser (HP) BO: Pols	EC Women in ICT BO: Pfisterer	WG Trade Fairs & Events Chair: Bielel (Alcatel-Lucent) BO: Paingt
	EC Mobile and Online Content Chair: Rodriguez (Vodafone D2) BO: Rehse	WG Defence Chair: Lehmann BO: Barth	WG Mobile Technology and Health Chair: Kullnick (Nokia Siemens Networks) BO: Skurk		WG Customs and International Trade Chair: Reitz (IBM) BO: Pols	EC Media Skills BO: Schmidt	WG E- and M-Business Chair: Waudig (Asknet) BO: Barth
	WG General Legal Matters of the Enterprise Chair: Mayer (Accenture) BO: Kriesel		EC PR for Mobile Technology and Health Chair: Stenberg (Nokia Siemens Networks) BO: Spahr			EC International Employment Law and Outsourcing BO: Gattermann	
	WG Competition Law and Consumer Rights Chair: Hofmeier (Telekom) BO: Dehmel					WG Learning Technologies BO: Schmidt	
	WG Data Protection Chair: Thoma (Siemens) BO: Dehmel						
	WG IT Law and Contracts Chair: Schweinoch (SKW-Schwarz Rechtsanwälte) BO: Kriesel						
	WG Public Contracts Chair: Hanswille (T-Systems)						
	EC Non-Product-Related Tendering Chair: Wurthmann (Intel)/Gütter (AMD)						

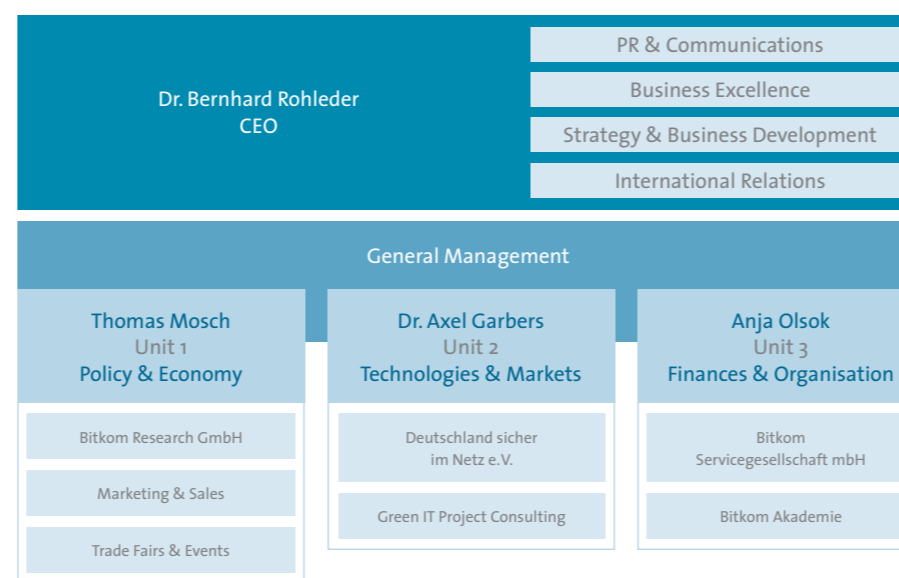
Unit 1

Technologies & Markets

Security	IT Services	Software	ECM	IT Infrastructure & Digital Office	Communication Technologies	Consumer Electronics & Digital Home	Telematics & Navigation	Technical Regulations & Market Access	Environment & Sustainability	ICT in Dialogue
SB Security Chair: Tschersich (Telekom) BO: Neugebauer	SB IT Services Chair: Wahl (T-Systems) BO: Weber	SB Software BO: Dorst	SB ECM BO: Engel	SB IT Infrastructure Chair: Wittmann (IBM) BO: Skurk	SB Communication Technologies Chair: Wulf (Alcatel-Lucent) BO: Klusmann	SB Consumer Electronics & Digital Home Chair: Schell (Kathrein-Werke) BO: Schidlack	Steering Committee Telematics & Navigation BO: Klusmann	SB Technical Regulations and Market Access Chair: Malina (IBM) BO: Herzog	SB Environment & Sustainability Chair: Höhn (IBM) BO: Herzog	Steering Committee ICT in Dialogue BO: Barth
Forum Security Chair: Tschersich (Telekom) BO: Neugebauer	Forum Outsourcing BO: Weber	Forum Software BO: Dorst	WG Markets & Strategies BO: Engel	Forum IT Infrastructure Chair: Wittmann (IBM) BO: Skurk	Forum Communication Technologies Chair: Wulf (Alcatel-Lucent) BO: Klusmann	Forum Consumer Electronics Chair: Schell (Kathrein-Werke) BO: Schidlack	PG Electromobility, Navigation & Logistics Chair: Evers (ITS Niedersachsen) BO: Klusmann	Forum Technical Regulations Chair: Malina (IBM) BO: Herzog	Forum Environmental Policies Chair: Höhn (IBM) BO: Herzog	Board E-Energy Chair: Arnold (HP) BO: Skurk
WG Security Management Chair: Fumy (Bundesdruckerei) BO: Neugebauer	WG Cloud Computing & Outsourcing Chair: Jahne (Accenture) BO: Weber	WG Quality Management Chair: Siebert (TUV IT) BO: Dorst	WG ECM Portals & PR Chair: Emmrich (Pentadoc Knowledge) BO: Förster	WG Server Concepts Chair: Müller (erecon) BO: Skurk	WG Mobile Communications Chair: Nindl (Qualcomm) BO: Klusmann	WG Digital Home Chair: Eid (Intel) BO: Schidlack	PG Intelligent Traffic Control Chair: Handke (ITS Network Germany) BO: Klusmann	WG Technical Regulations Chair: Malite (Sharp) BO: Herzog	WG International Environmental Politics & Sustainability Chair: Höhn (IBM) BO: Herzog	Board Banking & Financial Services Chair: Mitic (Atos) BO: Barth
EC Network Operators Chair: Reinema (Vodafone D2) BO: Neugebauer	WG Knowledge Management Chair: Schütt (IBM) BO: Weber	WG SOA Technologies Chair: Vollmar (IBM) BO: Dorst	WG ECM Trade Fairs & Events BO: Engel	WG Storage Technologies Chair: Klenner (HP) BO: Skurk	WG Network Infrastructure Chair: Fechner (Alcatel-Lucent) BO: Klusmann	WG Technical Services & Repair Chair: Gerster (Humax-Digital) BO: Schidlack	WG Applications & Advantages of Added Value Chair: Grigutsch (T-Systems) BO: Klusmann	WG Testing & Conformity Chair: Malina (IBM) BO: Herzog	WG Product-Related Environmental Protection Chair: Stutz (Dell) BO: Herzog	PG Transactions & Innovations BO: Barth
WG Security Technologies Chair: Schäfer (Datev) BO: Neugebauer	WG Professional Services Chair: Kröber (Emendis) BO: Weber	WG Software Development Processes and Tools Chair: Simon (SQS) BO: Dorst	WG Capture & Capture Services BO: Engel	WG Computer Centres & IT Infrastructure Chair: Schnabel (Schnabel-Consult) BO: Skurk	WG Business Communications Chair: Bien (Avaya) BO: Klusmann	WG Consumer Insights Chair: Gottstein (Telekom) BO: Schidlack	WG Cyberphysical Systems & Simulations Chair: Brucke (Offis) BO: Klusmann	EC Ergonomics Chair: Katzmann (IBM) BO: Herzog	WG Waste Disposal Chair: Augustynak (Hellmann) BO: Herzog	PG Sales & Conditions BO: Barth
WG Security Solutions Chair: Bauspieß (SAP) BO: Neugebauer	WG Service Delivery Excellence Chair: Duschka (T-Systems) BO: Weber	EC Project Management Chair: Gärtner (cdi) BO: Dorst	WG E-Mail Management BO: Engel	WG Thin Client & Server Based Computing Chair: Sternitzky (Citrix Systems) BO: Skurk	EC Operation Management Chair: Bürstenbinder (VAF) BO: Klusmann			EC Accessibility Chair: Wegge (Siemens) BO: Herzog		Board Pharma & Chemical Services BO: Barth
EC Electronic Identities Chair: Wolfenstetter (Telekom) BO: Neugebauer		WG Embedded Systems Chair: Degen (Sysgo) BO: Dorst	WG Output Solutions BO: Engel	WG Printing Solution Services Chair: Stottmeister (Off Script) BO: Skurk				WG EMV Chair: Jahn (IBM) BO: Herzog		PG Operation & Workflow BO: Barth
EC Biometrics Chair: von Foerster (Bosch Sicherheitssysteme) BO: Neugebauer		WG RFID/Auto-ID Chair: Gillert (Ubiconsult) BO: Herzog	WG ECM Outsourcing BO: Engel					WG Product Safety Chair: Werthschulte (Sony) BO: Herzog		PG Product Integrity and Counterfeit Medecin Safety BO: Barth
		WG Open Source Chair: Loxen (SerNet) BO: Dorst	WG ECM Specs & Standards BO: Engel					WG Occupational Safety Chair: Schuchmann (Telekom) BO: Herzog		Board Wholesale and Retail Trading BO: Barth
			WG CRM BO: Engel					WG Standardization Chair: Friedrich (IBM) BO: Herzog		
			WG ECM Compliance BO: Engel							
			WG Business Collaboration BO: Engel							
			WG Signatures BO: Engel							
			WG ECM Across the Regions BO: Engel							

Unit 2

The Structure of BITKOM



Abbreviations

- SB Steering Board
- WG Working Group
- EC Expert Committee
- BO BITKOM Office
- PG Project Group

State: December 2011